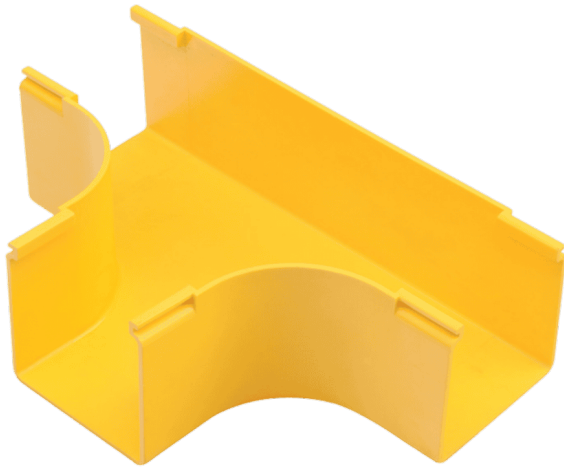




StarTrail Fiber Raceway, Horizontal Tee for Duct W60mm x H60mm (PVC)



Product Part Number

N411.HT0606P

Product Description

The **StarTrail Fiber Raceway Horizontal Tee** is designed to create a **90° horizontal branch** from a straight run within a 60mm x 60mm duct system. Ideal for structured cabling pathways in data centers and telecom facilities, this PVC fitting allows seamless branching without compromising cable integrity. Engineered with precision, it requires **three connectors** for secure installation and is constructed from **UL94-V0 flame-retardant PVC**, ensuring both performance and safety in high-density fiber environments.

Product Features

- **Efficient Horizontal Branching** : Enables a 90° horizontal diversion from a main duct run, ideal for expanding fiber pathways in multiple directions.
- **Flame-Retardant Construction** : Manufactured from UL94-V0 rated PVC, offering high resistance to fire and ensuring compliance with industry safety standards.
- **System Compatibility** : Attaches seamlessly to StarTrail 60mm x 60mm ducts and fittings, maintaining consistent cable routing and management.
- **Secure Installation** : Requires three connectors (sold separately) to ensure a stable and reliable connection at all joint points.
- **Modular Design Integration** : Supports modular fiber raceway configurations, making it easy to adapt or expand infrastructure as network needs evolve.





NORTHERN
LINK

StarTrail Fiber Raceway, Horizontal Tee for Duct W60mm x H60mm (PVC)

Ordering Information

N411.HT0606P	StarTrail Fiber Raceway, Horizontal Tee for Duct W60mm x H60mm (PVC)
--------------	--

Shipping Information

Item	Dimension
Product	Width : 600mm Height : 100mm
Packaging	Length : 768mm Width : 768mm Height : 116.5mm

