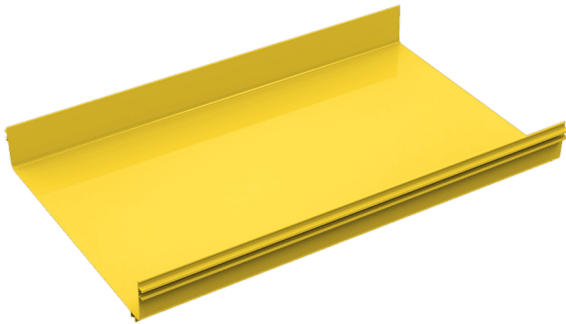




StarTrail Fiber Raceway, Straight Section Duct W600mm x H100mm, 2m (PVC)



Product Part Number

N411.D612P

Product Description

The StarTrail Fiber Raceway Straight Section Duct offers a robust and reliable solution for managing fiber optic cables in high-density environments. With its 600mm width and 100mm height, this 2-meter PVC duct provides ample capacity while maintaining cable protection and organization. Ideal for data centers, telecommunications hubs, and enterprise networks, its modular design ensures seamless integration into your cabling infrastructure.

Product Features

- **Ample Cable Space** : With a 600mm width and 100mm height, this duct provides sufficient capacity for managing high volumes of fiber optic cables.
- **Durable PVC Material (Flame Retardant)** : Crafted from robust PVC, ensuring resistance to impact, wear, and environmental factors while meeting fire safety standards.
- **Smooth Interior Surface** : Minimizes cable friction and ensures easy installation and maintenance of fiber optic cables.
- **Modular Design Compatibility** : Easily integrates with other StarTrail raceway components, allowing flexible configurations to suit your cabling infrastructure needs.





StarTrail Fiber Raceway, Straight Section Duct W600mm x H100mm, 2m (PVC)

Recommended Cable Density

Stacking Height	Dia. 1.6mm	Dia. 2.0mm	Dia. 3.0mm	Dia. 5.2mm	Dia. 6.1mm
50% Fill	11700	7500	3300	1100	760
75% Fill	17550	11250	4950	1650	1140
100% Fill	23400	15000	6600	2200	1520

For Fiber Raceway Size : 600mm x 100mm

Ordering Information

N411.D612P	StarTrail Fiber Raceway, Straight Section Duct W600mm x H100mm, 2 meters (PVC)
------------	--

Shipping Information

Item	Dimension
Product	Length : 2000mm Width : 600mm Height : 100mm
Packaging	Length : 2000mm Width : 636mm Height : 118mm

